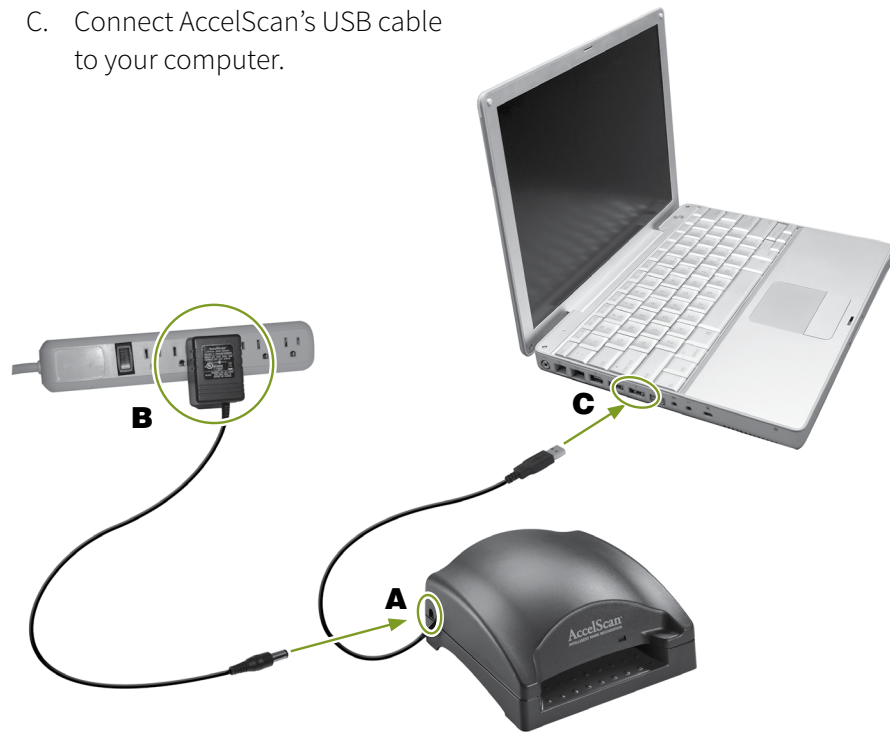


# AccelScan™ Setup

## 1 Plug In AccelScan and Connect It to Your Computer

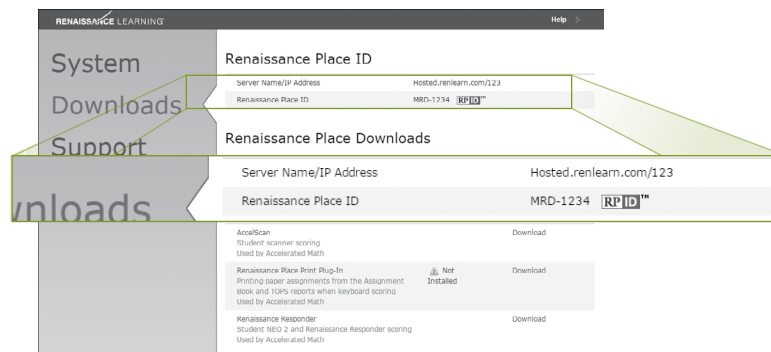
- A. Connect the power cable to your AccelScan.
- B. Plug in the AccelScan.
- C. Connect AccelScan's USB cable to your computer.



## 2 Download the Software from Renaissance Place and Install the Software\*

- A. In your browser, go to the address for Renaissance Place and log in.
- B. Go to the Downloads page. (For more information, see <https://help.renaissance.com/AM2/AM2InstallAccelScan>.)

**C. Note the server address! You will need this later.**



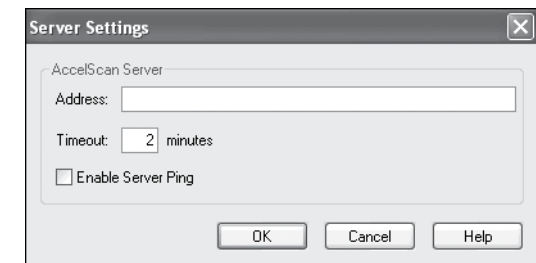
- D. Click the AccelScan link for your type of computer to download the file.

**E. To install the software, you need administrative rights on the computer so that you can install software for all users. Log in to the computer as an administrator. (If you have questions, see the Technology/Computer coordinator for your school.)**

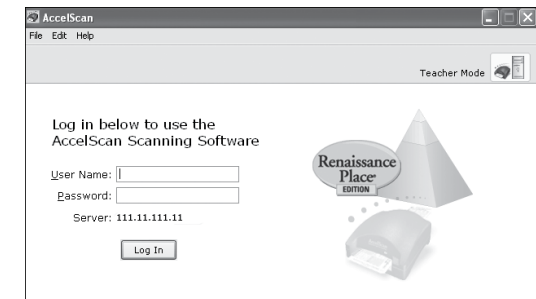
- F. Double-click the file you downloaded. (If you chose to run the file when you downloaded it, skip this step.)
- G. Follow the instructions in the installer.

## 3 Start Using the AccelScan Software\*

- A. After installing, start AccelScan.
- B. Fill in the address from step 2C. Click **OK**.



- C. Enter your Renaissance Place user name and password and click **Log In**.



- D. The AccelScan light turns green, and the software tells you it's ready to scan. For scanning instructions, click **Help** in Accelerated Math (Live); for Accelerated Math 2.0, click **?**, then **Help**. In Accelerated Math (Live), you can also click **Manuals** to find the *Accelerated Math Software Manual*.

If there's a problem, click **Scanner Settings**, then select the port where the scanner is connected (such as USB). If the scanner has an on/off switch, make sure it is on. Once the program detects the scanner, the exclamation point over the scanner icon disappears and you can choose a sensitivity setting for the scanner. Click **OK**.

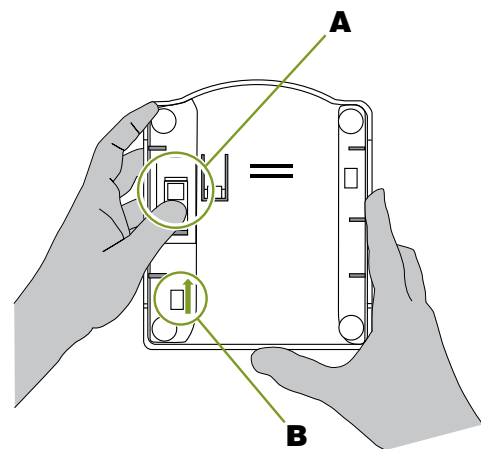


\* If you are using AccelScan with AccelTest or a desktop Renaissance Learning product, you won't use this software. See your product's software manual for instructions.

\* If you are using AccelScan with AccelTest or a desktop Renaissance Learning product, you won't use this software. See your product's software manual for instructions.

## Cleaning AccelScan

- Unplug the AccelScan from the electrical outlet.
- Hold down **A** with your left thumb.
- Slide the base up (in the direction of arrow **B**) with your right thumb until the tabs no longer hold the base in place. Remove the base.
- Clean the lens area with compressed air electronic equipment duster. (Follow the manufacturer's instructions.)
- To reattach the base, fit the slots over the tabs and slide the base down to lock it into place.



## Problems?

If your AccelScan fails to perform as designed, please contact Technical Support:

### USA:

Email: [support@renaissance.com](mailto:support@renaissance.com)  
Toll-Free Number: (800) 338-4204

### UK and Europe:

Email: [support@renlearn.co.uk](mailto:support@renlearn.co.uk)  
Telephone: +44 (0)20 7184 4000

### Australia:

Email: [worldsupport@renaissance.com](mailto:worldsupport@renaissance.com)  
Telephone: +61 2 4225 9698

### UAE:

Email: [worldsupport@renaissance.com](mailto:worldsupport@renaissance.com)

## Notices

Covered under one or more of the following patents: USP 7068861, USP D476656, and USP 6736319. Additional patents pending.

This product is intended to be supplied by a UL Listed Direct Plug-In Power Unit marked "Class 2" and rated 24 V DC, 250 mA.

Tested to Comply with FCC Standards FOR HOME OR OFFICE USE.

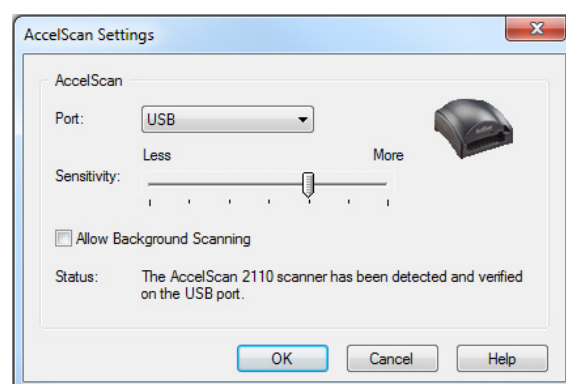
This device complies with Part 15 of the FCC rules. Operation of this device is subject to the following two conditions: (1) this device may not cause harmful interference, and (2) this device must accept any interference received, including interference that may cause undesired operation.

This Class B device complies with Canadian ICES-003.  
Cet appareil numérique de la classe B respecte toutes les exigences du Règlement sur le matériel brouilleur du Canada.

## Setting Scanner Sensitivity

If you need AccelScan to be more or less sensitive to marks on a card, follow these steps:

- Windows:** Click the **Edit** menu and choose **AccelScan Settings**.  
**Macintosh:** Click the **AccelScan** menu and choose **Preferences**.
- Move the Sensitivity arrow to the right to make the scanner more sensitive or to the left to make it less sensitive. Click **OK**.



## RENAISSANCE®

© 2017, Renaissance Learning, Inc.  
All logos, designs, and brand names for Renaissance Learning's products and services, including but not limited to AccelScan, Accelerated Math, AccelTest, Renaissance, Renaissance Learning, and Renaissance Place, are trademarks of Renaissance Learning, Inc., and its subsidiaries, registered, common law, or pending registration in the United States and other countries. All other product and company names should be considered the property of their respective companies and organizations.