

What's New in AccelScan Renaissance Place 2.0

AccelScan™ Renaissance Place™ 2.0 is an updated Macintosh™ client that supports the newer operating systems and Intel processor Macs. This is a Mac only update. Windows™ customers will continue to use AccelScan 1.43 or 1.44 as they are currently.

To install AccelScan 2.0, customers will need to go to the Check Software Requirements or Download Supporting Software page. Since AccelScan 2.0 works with Macintosh OS 10.4 or later, customers will still see the previous versions of Macintosh AccelScan in addition to the new 2.0 version. Customers should install the AccelScan version that matches their Macintosh operating system. Customers can have AccelScan 1.42 and 2.0 running on different computers but using the same Renaissance Place server.

Note: Launching AccelScan 1.42 will not trigger an update to AccelScan 2.0. Customers will need to go to the Check Software Requirements or Download Supporting Software page and manually chose to download and install AccelScan 2.0.

Client Application Software

After installation, client applications will need your Server Name or IP Address to access data.
Your Server Name or IP Address is:

Software / Primary Use	Action
AccelScan and Renaissance Responder	AccelScan 1.42 for Macintosh OS 9.x AccelScan 1.42 for Macintosh OS 10.2.8 - 10.3x AccelScan 2.0 for Macintosh OS 10.4 or later AccelScan 1.43 for Windows Renaissance Responder 1.05 for Macintosh OS X or later Renaissance Responder 1.05 for Windows

Teachers will continue to log into AccelScan using their Renaissance Place User name and Password.



By default, they will be logged with full access to all of AccelScan. Clicking the Student Mode button will hide the menu options and will not allow closing of AccelScan without a user name and password.



Student Mode button.

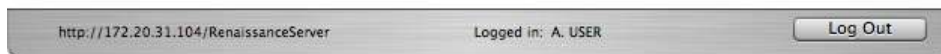
If the lock icon is open, the user has full access to AccelScan.



If the lock icon is closed, AccelScan is in Student Mode and only scanning is available.



Insert a card into the scanner.



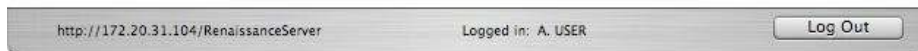
Once a student has scored a scan card, information about the scanned assignment will appear on screen and the next assignment can be scanned. All of the messages shown in AccelScan have been reviewed and the ATOS™ level has been reviewed to help ensure messages are simple and meaningful for students.



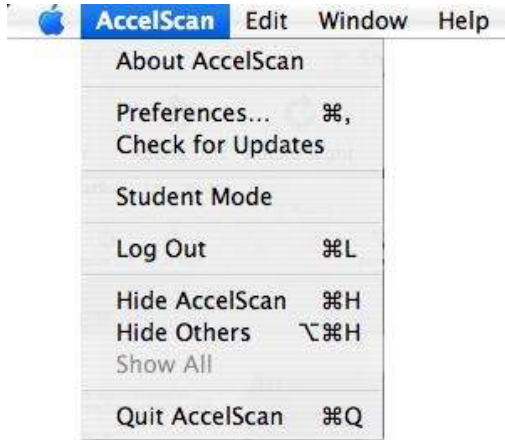
Assignment scored successfully.
Your next practice has been printed.

Form Number: 16
Assignment Type: Practice
Student: Myles Bennett
Grade: 4

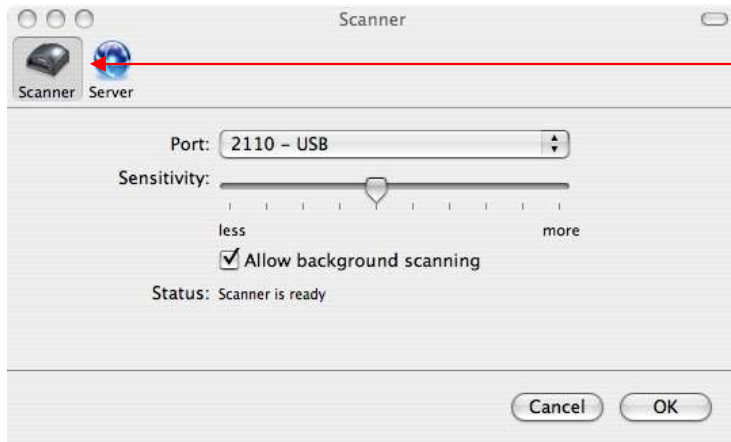
Insert a card into the scanner.



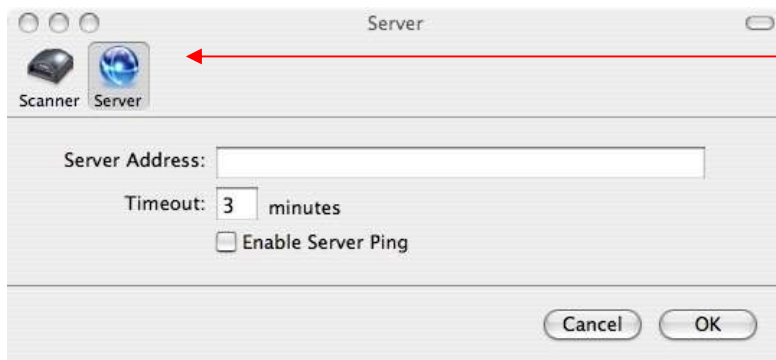
From the AccelScan Menu, teachers will have the option to set Preferences, Check for Updates and turn on or off Student Mode.



In Preferences, teachers can click on Scanner or Server to set the appropriate preferences. By default AccelScan will now search for the USB port first which should make scanner detection quicker for USB scanner customers.



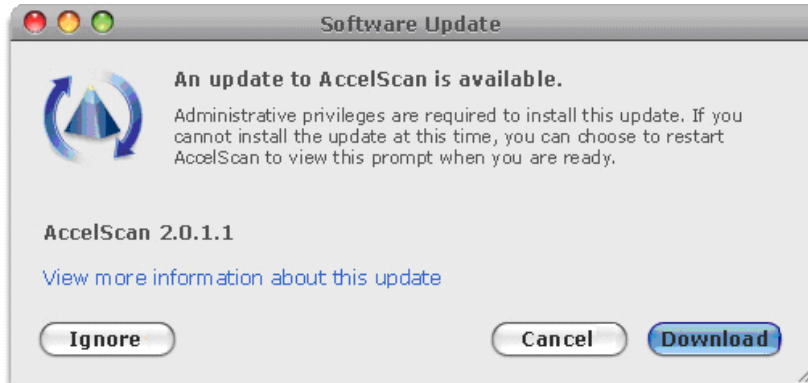
Scanner preference



Server preference

In Check for Updates, a teacher can check to see if there are any optional or mandatory updates available for AccelScan.

Optional updates can be installed as it is convenient for the teacher. A teacher can continue to use AccelScan 2.0 even if they have not installed an optional update.



A mandatory update is required to be installed before the teacher can use AccelScan 2.0. It is felt that mandatory updates will be rare and that most updates will be optional updates.

